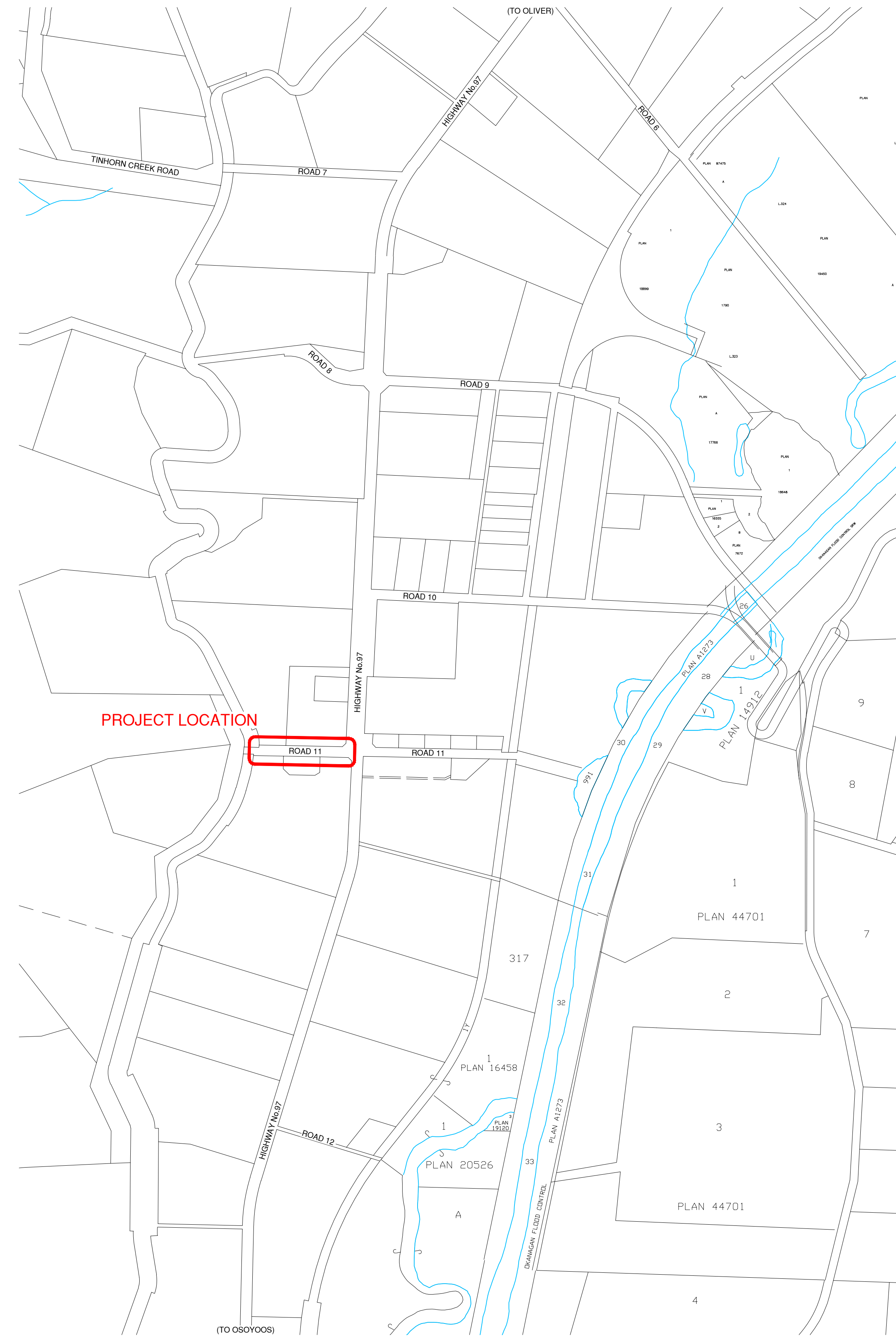


# TOWN OF OLIVER

## HESTER CREEK SPILLWAY PIPE RELINING

PROJECT NAME		
DRAWING NO.	DRAWING TITLE	REVISION
TITLE SHEET		
CIVIL		
302-632-01	COVER PAGE AND LOCATION PLAN	1
302-632-02	PLAN AND DETAILS	1
302-632-03	STRUCTURAL DETAILS	1
STRUCTURAL		
MECHANICAL		
ELECTRICAL		



PROJECT LOCATION

**LOCATION PLAN**  
SCALE 1:5000

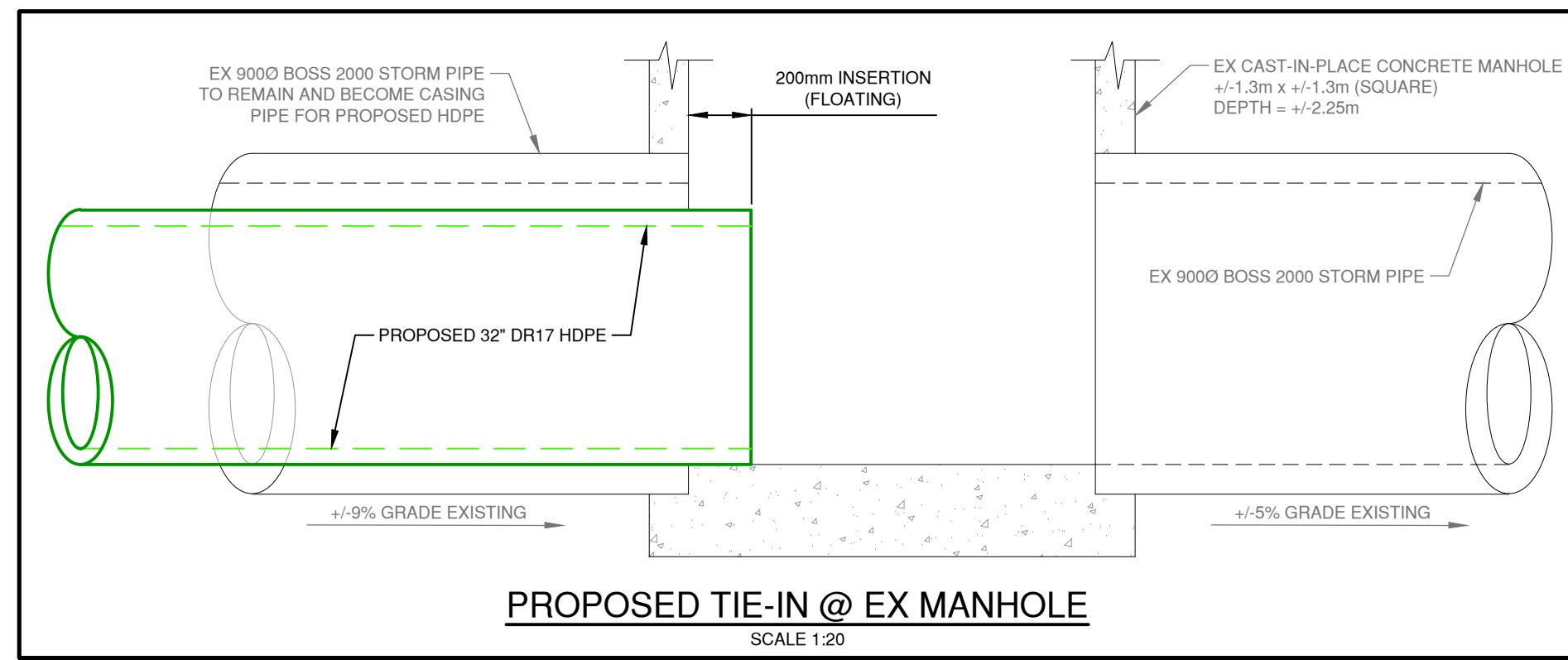
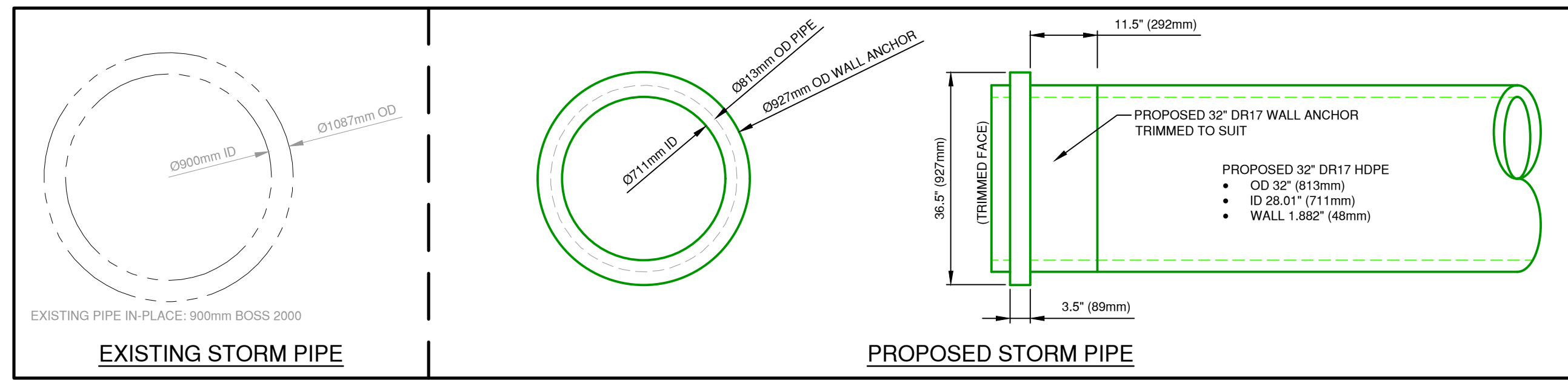


TRUE PROJECT NO.: 306-632

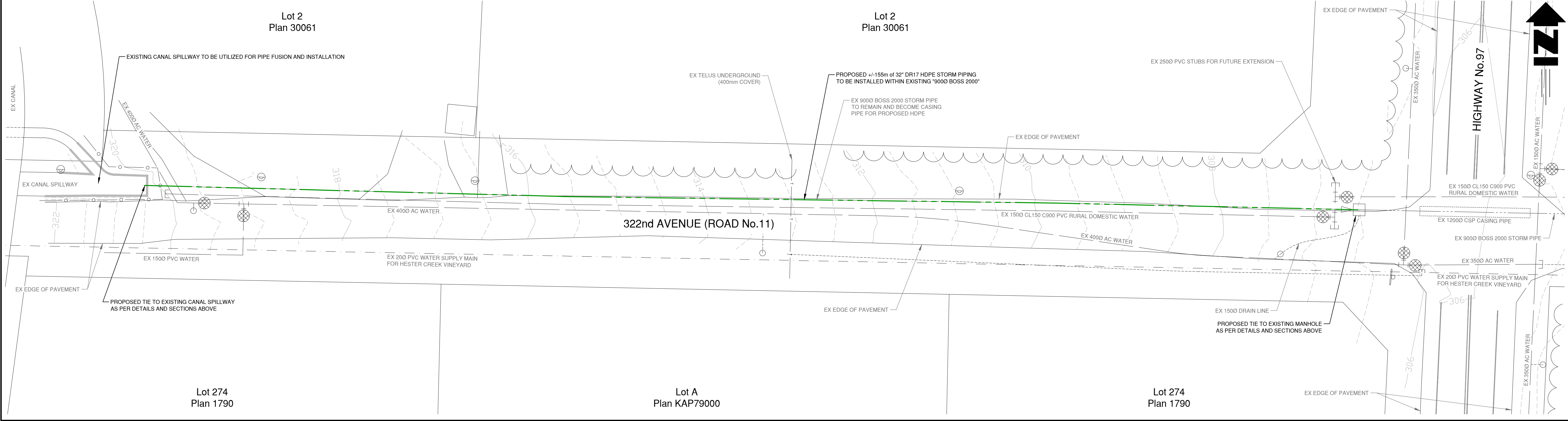
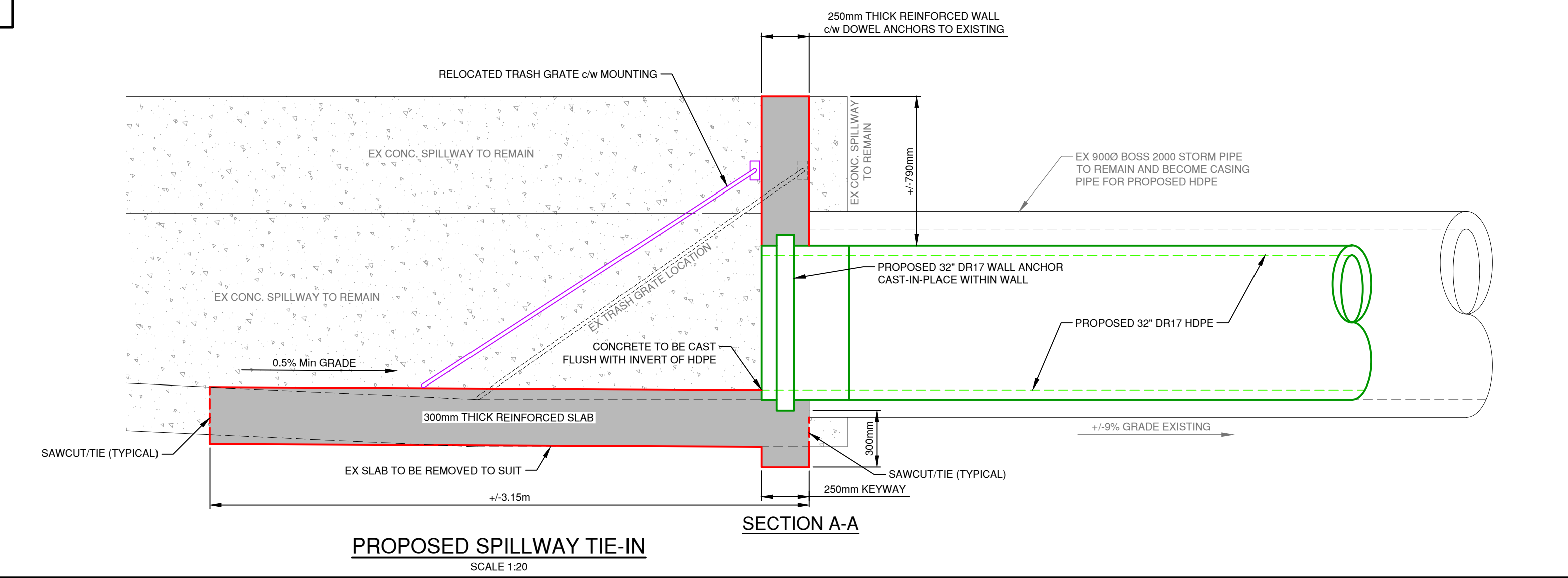
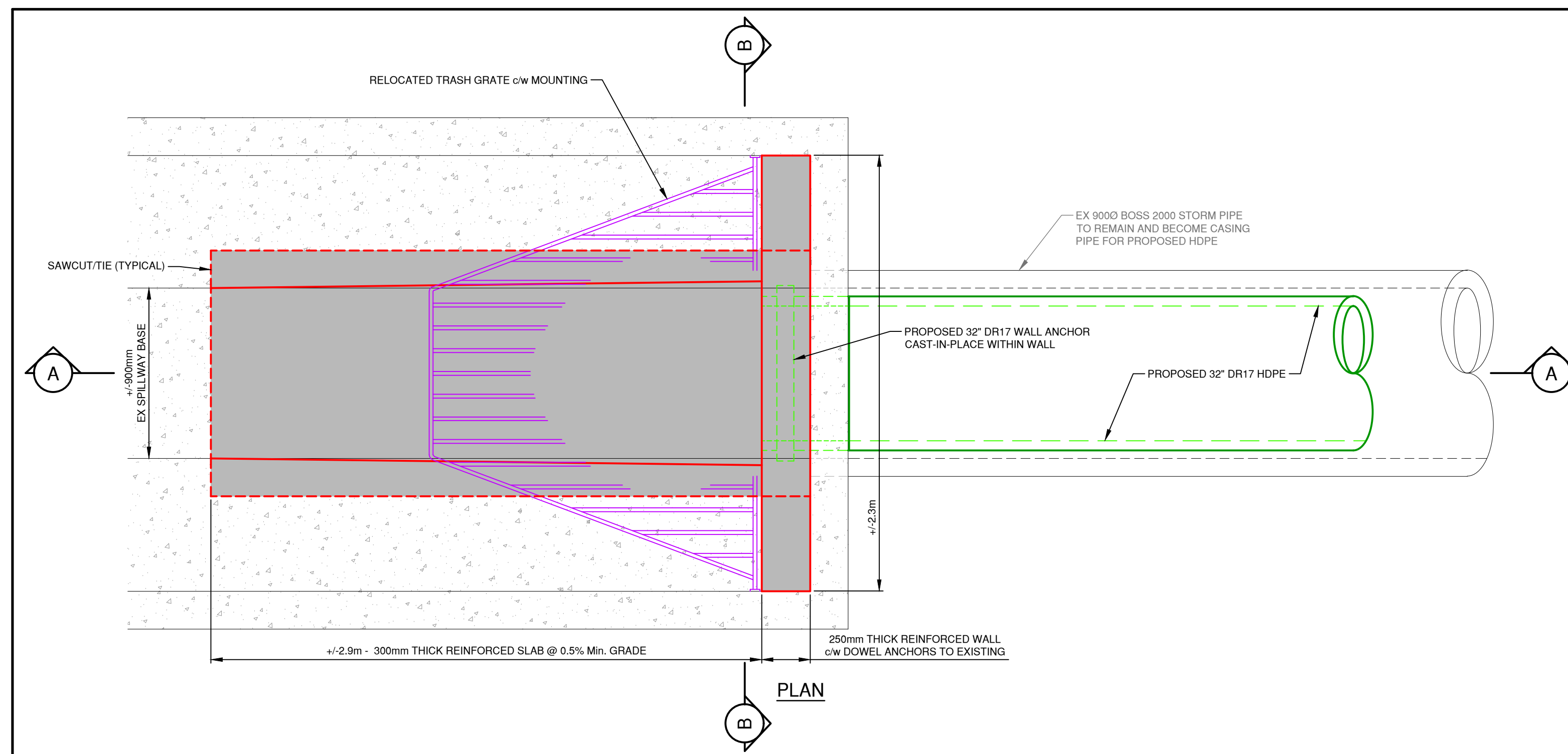
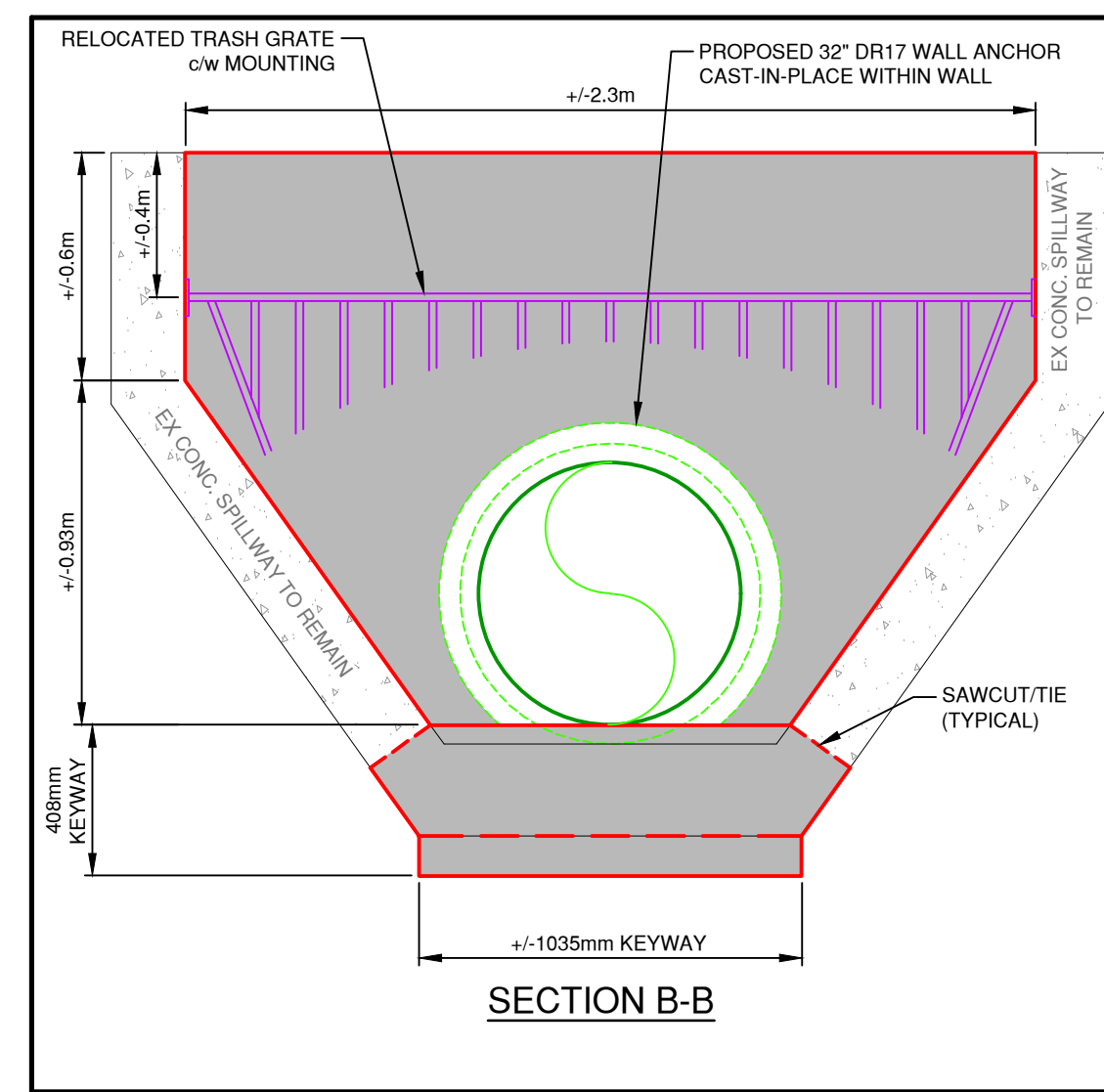


ISSUED FOR TENDER  
ISSUE DATE: JULY 16, 2020

FILE: OLIVER\306-632\306-632-03.dwg



EXISTING SPILLWAY @ TIE-IN



LEGEND		
EXISTING	PROPOSED	DESCRIPTION
		SANITARY MAIN
		SANITARY FORCEMAIN
		CLEANOUT
		LIFT STATION
		SEPTIC TANK
		STORM MAIN
		STORM DITCH
		CULVERT
		STORM MANHOLE
		CATCH BASIN
		STORM DRYWELL
		WATER MAIN
		WATER SERVICE
		CURB STOP VALVE
		STANDPIPE
		HYDRANT
		AIR RELEASE VALVE
		REDUCER
		SPRINKLER
		IRRIGATION BOX
		END CAP
		POWER
		TEL CABLE
		STREET LIGHT
		GAS
		POWER POLE
		LAMP STANDARD
		LIGHT POST
		POLE ANCHOR
		JUNCTION BOX
		TEST PIT
		IRON PIN
		SURVEY CONTROL

No.	DATE	DESCRIPTION	BY	APPD
1	JULY 16/20	ISSUED FOR TENDER	TT	SU

ISSUES / REVISIONS	



**TRUE CONSULTING**

201 - 2079 Falcon Road • Kamloops BC • V2C 4J2  
 Tel 250.828.0881 • Fax 250.828.0717  
 info@TRUE.bc.ca

**Oliver** Town of  
 CANADA'S WINE CAPITAL

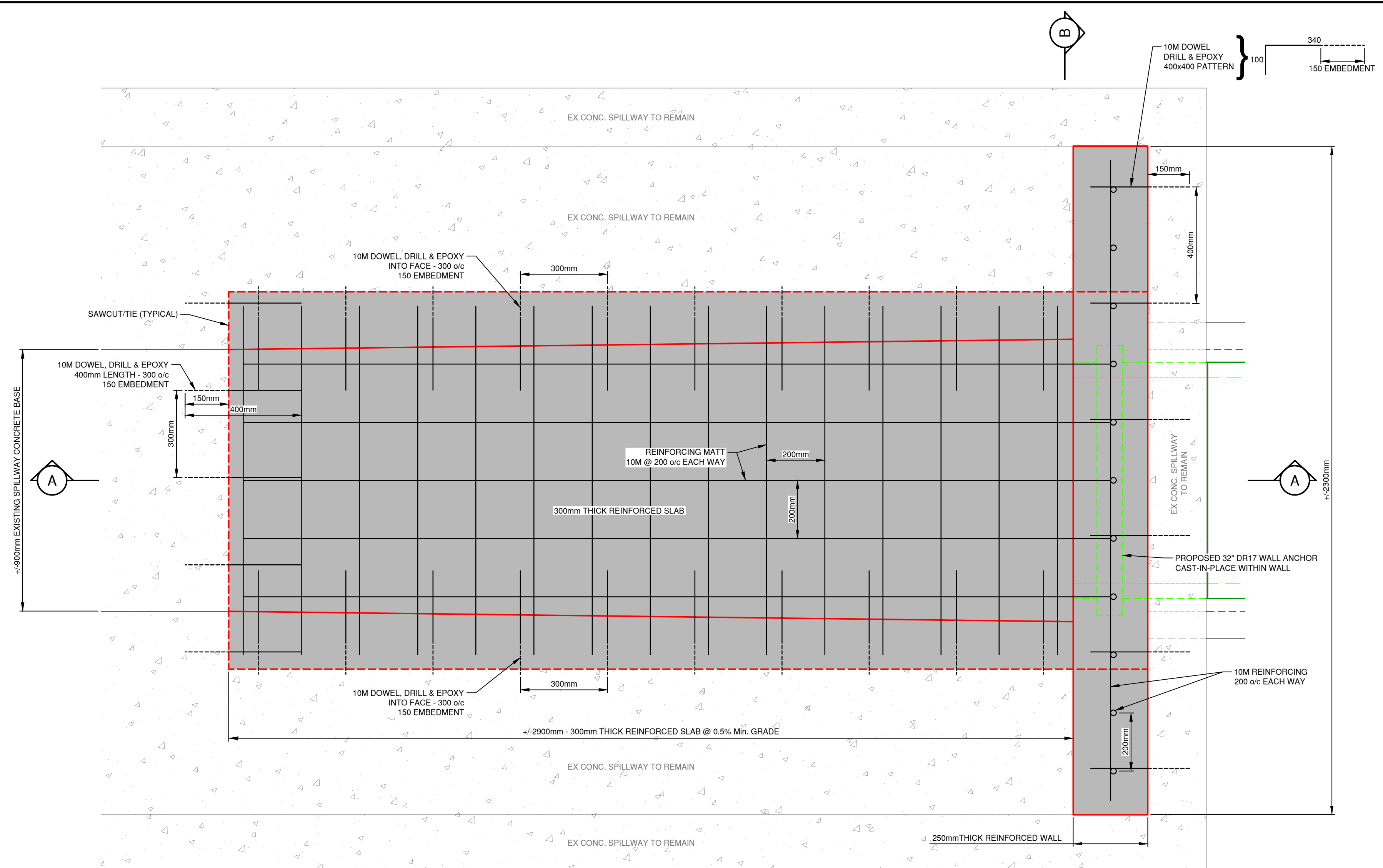
**HESTER CREEK SPILLWAY PIPE RELINING**

**PLAN AND DETAILS**

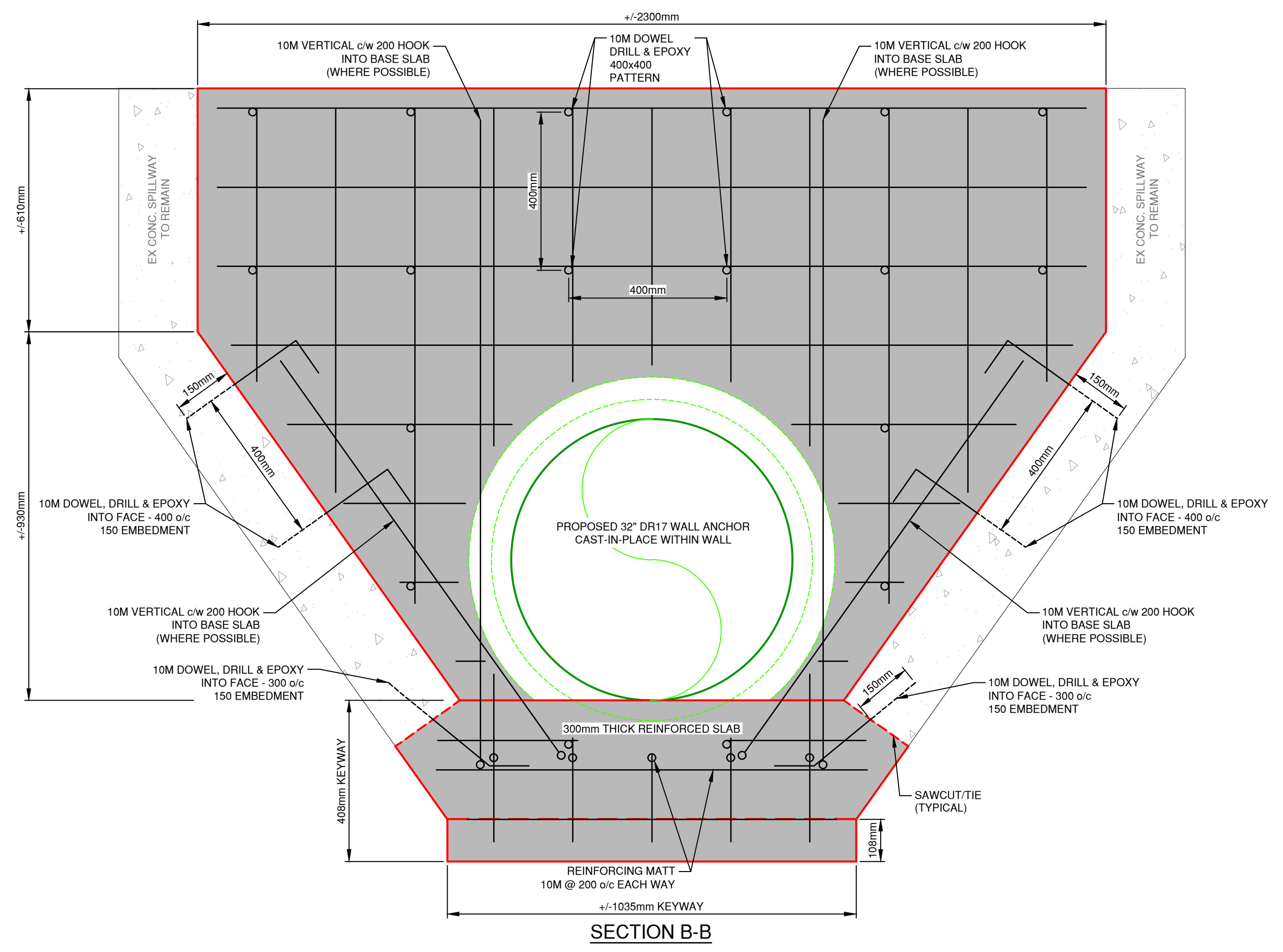
SCALE	1:250 (UNLESS NOTED)
DESIGN BY	SU/TT
DRAWN BY	TT
DATE	FEB 2020
PROJECT REFERENCE No.	306-632
DRAWING No.	306-632 02
SHEET	1

**NOTES:**

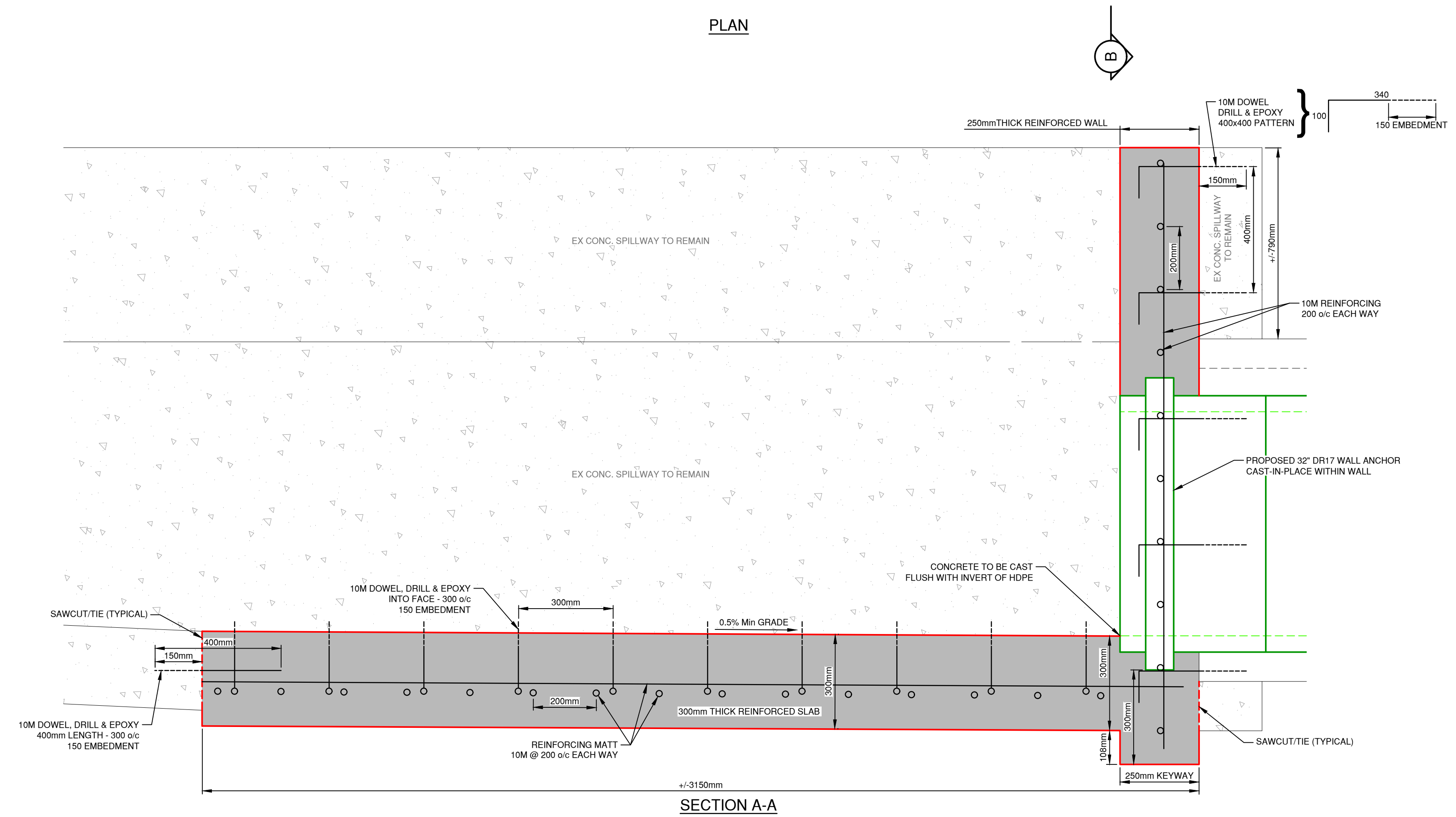
1. PROPOSED CAST-IN-PLACE CONCRETE SLAB AND KEYWAY TO BE ON COMPACTED ORIGINAL BASE GRAVELS *o/w* CONCRETE INFILL AS REQUIRED.
2. CONCRETE TO BE 25MPa @ 28 DAYS, EXPOSURE CLASS F-1.
3. BASE OF CHANNEL TO BE HAND-TROWELED.
4. THE EXISTING CONCRETE HEADWALL FACE IS TO BE PRESSURE-WASHED PRIOR TO CONCRETE PLACEMENT.
5. ALL CONCRETE SURFACES ARE TO BE CLEAN AND SSD (SATURATED SURFACE DRY) WHEN CONCRETE IS BEING PLACED.
6. CAST CONCRETE SHALL BE KEPT MOIST FOR A MINIMUM OF 3 DAYS AFTER PLACEMENT.
7. GRAVEL BASE MATERIALS SHALL BE WETTED DOWN, PRIOR TO CONCRETE PLACEMENT, TO MINIMIZE MOISTURE LOSS OF CONCRETE.



**PLAN**



**SECTION B-B**



**SECTION A-A**

LEGEND		
EXISTING	PROPOSED	DESCRIPTION
		SANITARY MAIN
		SANITARY MANHOLE
		CLEANOUT
		LIFT STATION
		SEPTIC TANK
		STORM MAIN
		STORM DITCH
		CULVERT
		STORM MANHOLE
		CATCHBASIN
		STORM DRYWELL
		WATER MAIN
		WATER SERVICE
		CURB STOP VALVE
		STANDPIPE HYDRANT
		AIR RELEASE VALVE
		REDUCER
		SPRINKLER
		IRRIGATION BOX
		END CAP
		POWER
		TEL
		CABLE
		STREET LIGHT
		GAS
		POWER POLE
		LAMP STANDARD
		LIGHT POST
		POLE ANCHOR
		JUNCTION BOX
		TEST PIT
		IRON PIN
		SURVEY CONTROL

No.	DATE	DESCRIPTION	BY	APPD
1	JULY 16/20	ISSUED FOR TENDER	TT	SU

**ISSUES / REVISIONS**

CONSULTANT SEAL

**TRUE CONSULTING**

201 - 2079 Falcon Road ■ Kamloops BC ■ V2C 4J2  
 tel 250.828.0881 ■ fax 250.828.0717  
 info@TRUE.bc.ca

**Oliver** Town of  
 CANADA'S WINE CAPITAL

**HESTER CREEK SPILLWAY PIPE RELINING**

**STRUCTURAL DETAILS**

SCALE	1:10
DESIGN BY	SU/TT
DRAWN BY	TT
DATE	JULY 2020
PROJECT REFERENCE No.	306-632
DRAWING No.	SHEET
<b>306-632 03</b>	ISSUE-REV
	<b>1</b>