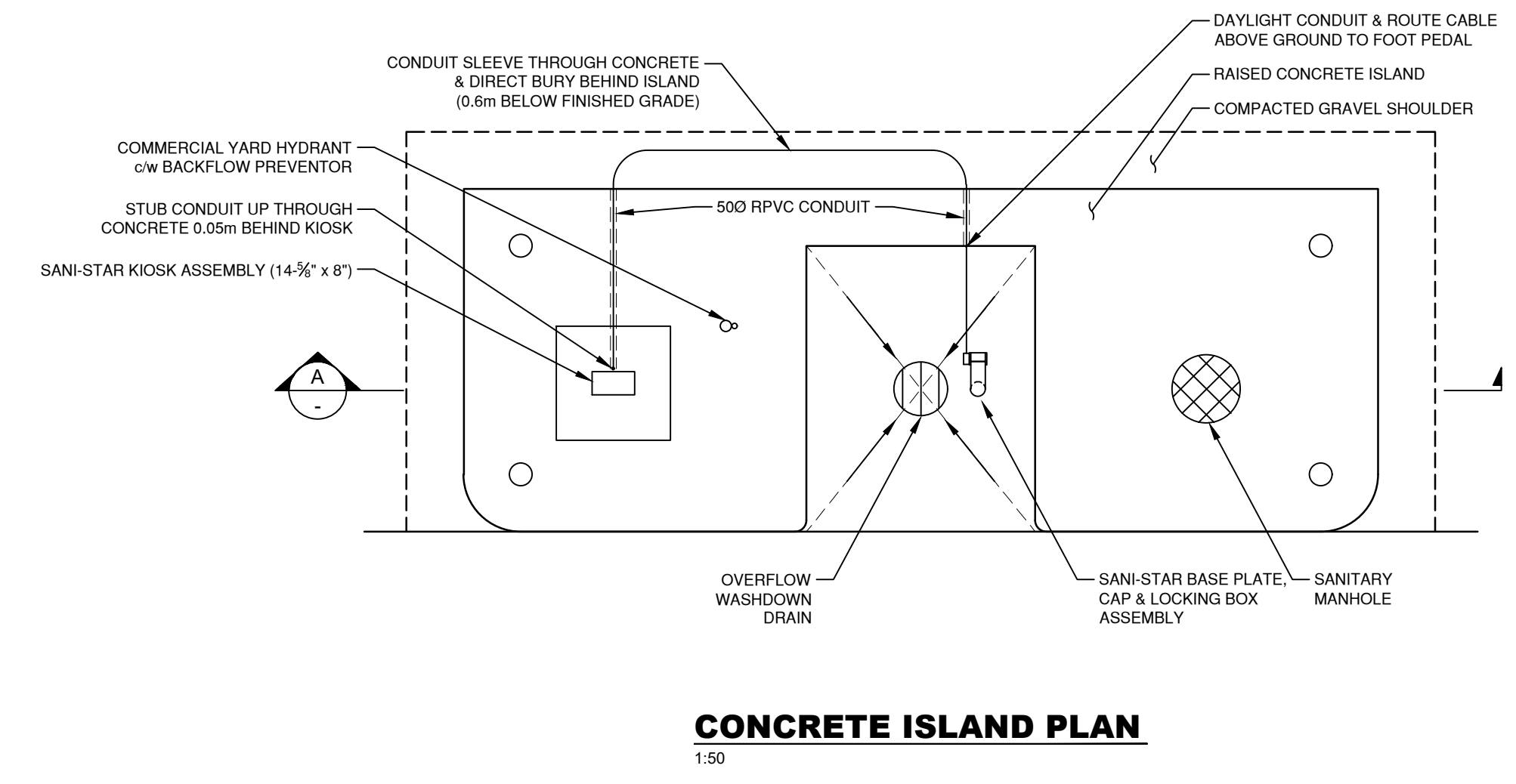
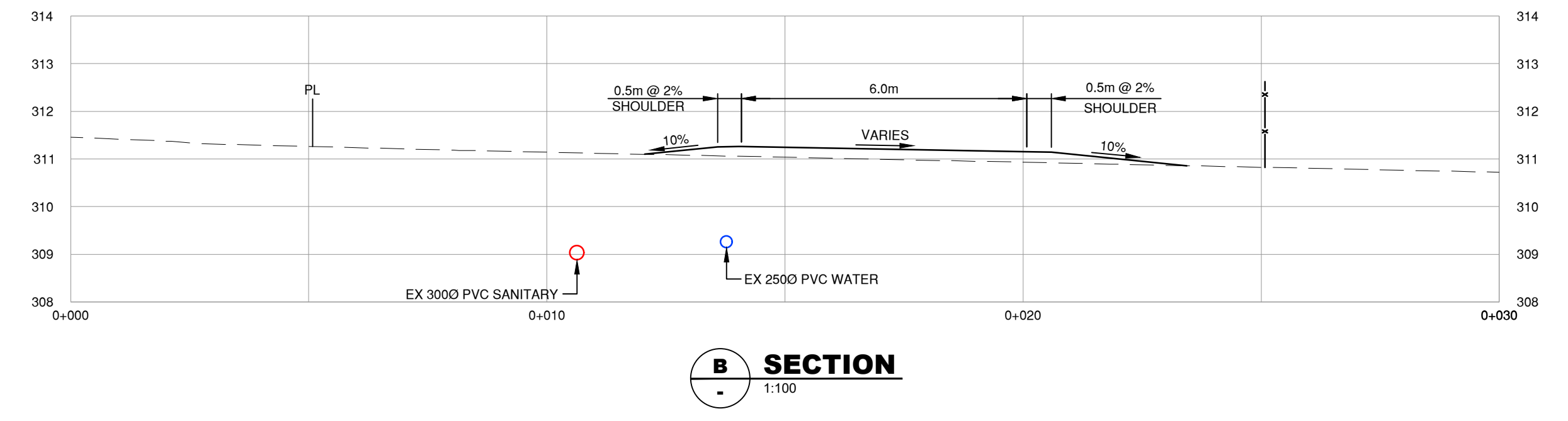


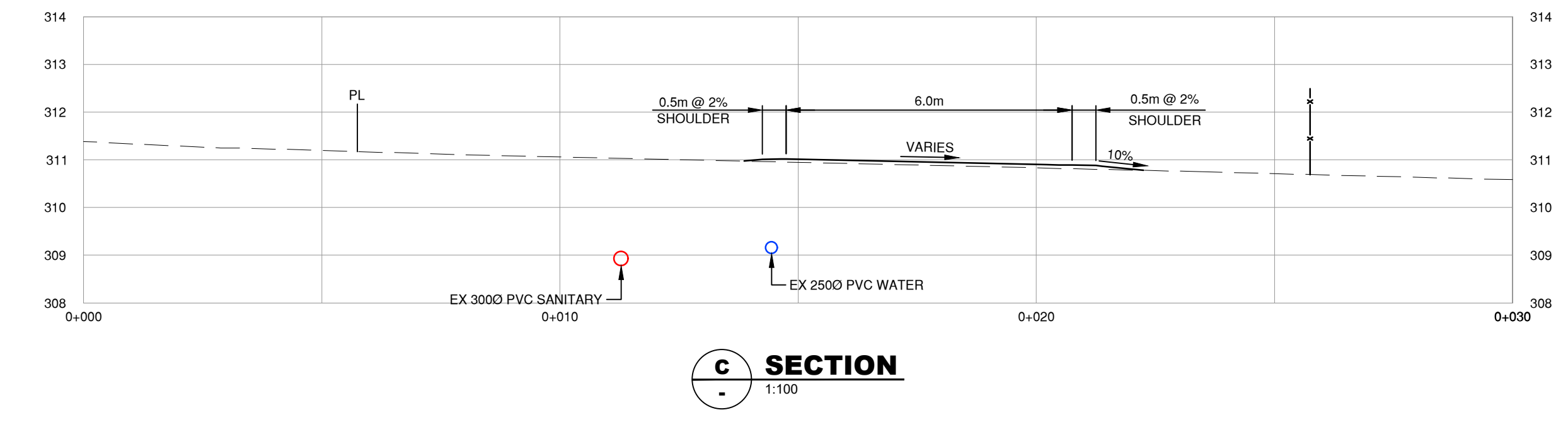
A SECTION
1:25



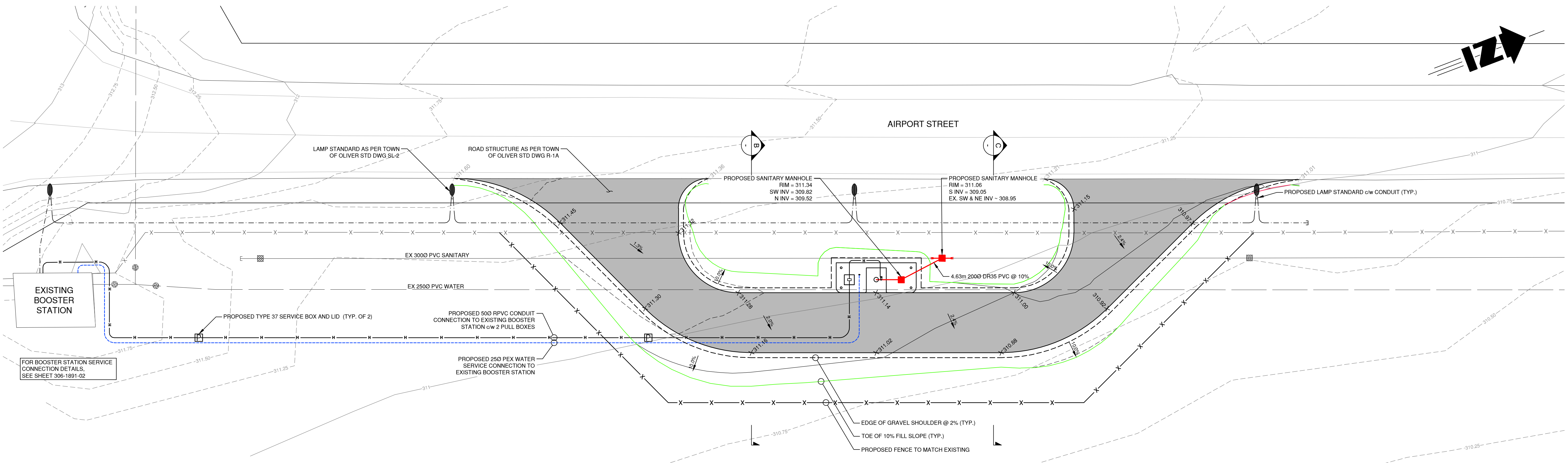
CONCRETE ISLAND PLAN
1:50



B SECTION
1:100



C SECTION
1:100



LEGEND		
EXISTING	PROPOSED	DESCRIPTION
		SANITARY MAIN
		SANITARY FORCEMAIN
		CLEANOUT
		LIFT STATION
		SEPTIC TANK
		STORM MAIN
		STORM DITCH
		CULVERT
		STORM MANHOLE
		CATCHBASIN
		STORM DRYWELL
		WATER MAIN
		WATER SERVICE
		CURB STOP VALVE
		STANDPIPE HYDRANT
		AIR RELEASE VALVE
		REDUCER
		SPRINKLER
		IRRIGATION BOX
		END CAP
		POWER
		TEL CABLE
		STREET LIGHT
		GAS
		POWER POLE
		LAMP STANDARD
		LIGHT POST
		POLE ANCHOR
		JUNCTION BOX
		TEST PIT
		IRON PIN
		SURVEY CONTROL

No.	DATE	DESCRIPTION	BY	APPD
3	MAR 17/20	ISSUED FOR TENDER	LR	SU
2	MAR 10/20	ISSUED FOR CLIENT REVIEW	LR	SU
1	FEB 18/20	ISSUED FOR REVIEW	LR	SU

ISSUES / REVISIONS

CONSULTANT SEAL

TRUE CONSULTING

201 - 2079 Falcon Road = Kamloops BC = V2C 4J2
tel 250.828.0881 = fax 250.828.0717
info@TRUE.bc.ca

Oliver Town of
CANADA'S WINE CAPITAL

AIRPORT STREET SANI DUMP

SITE SERVICING & GRADING PLAN

SCALE 0 1:200 10

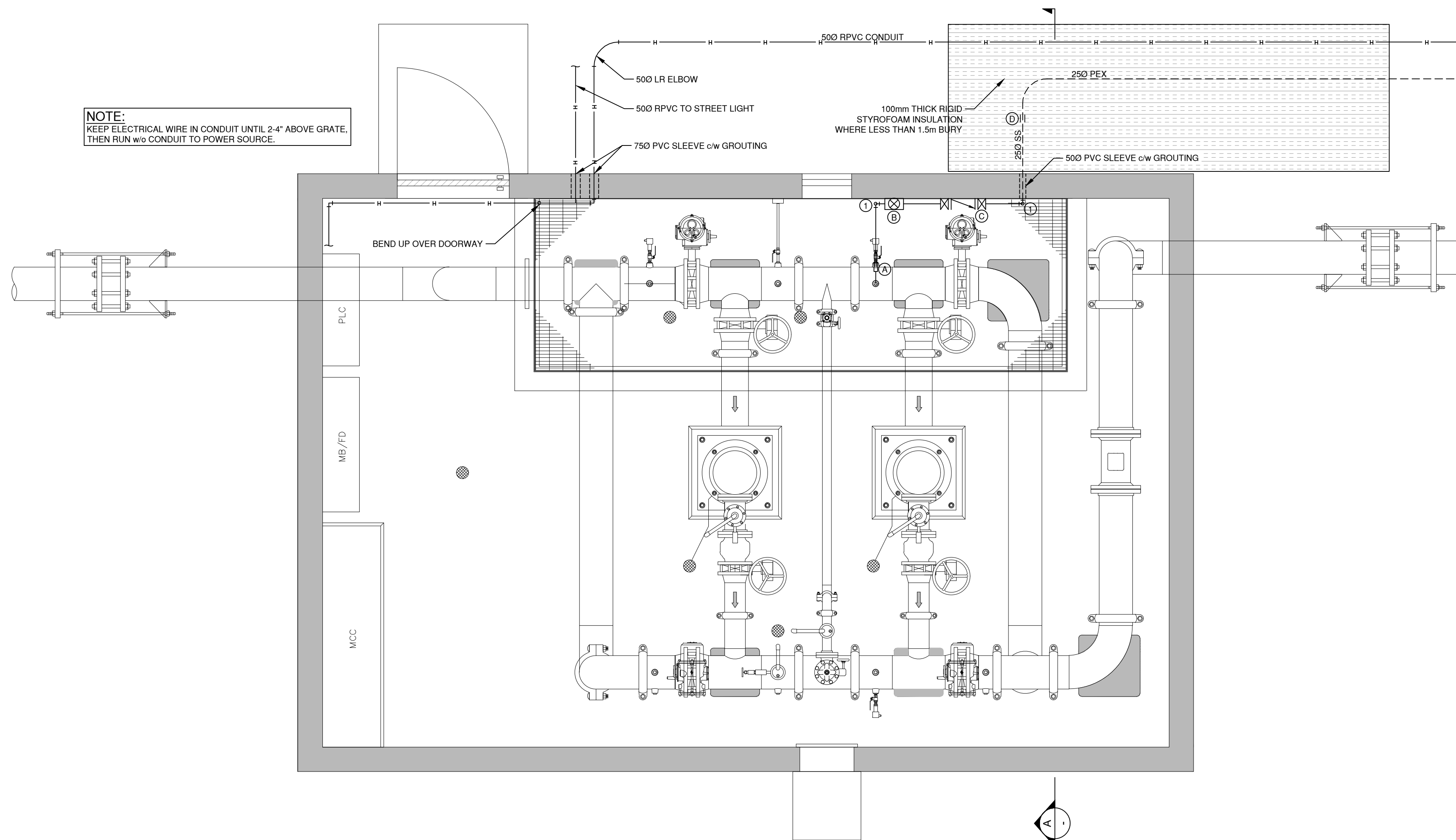
DESIGN BY SU
DRAWN BY LR
DATE FEB 2020

PROJECT REFERENCE No. 306-1891

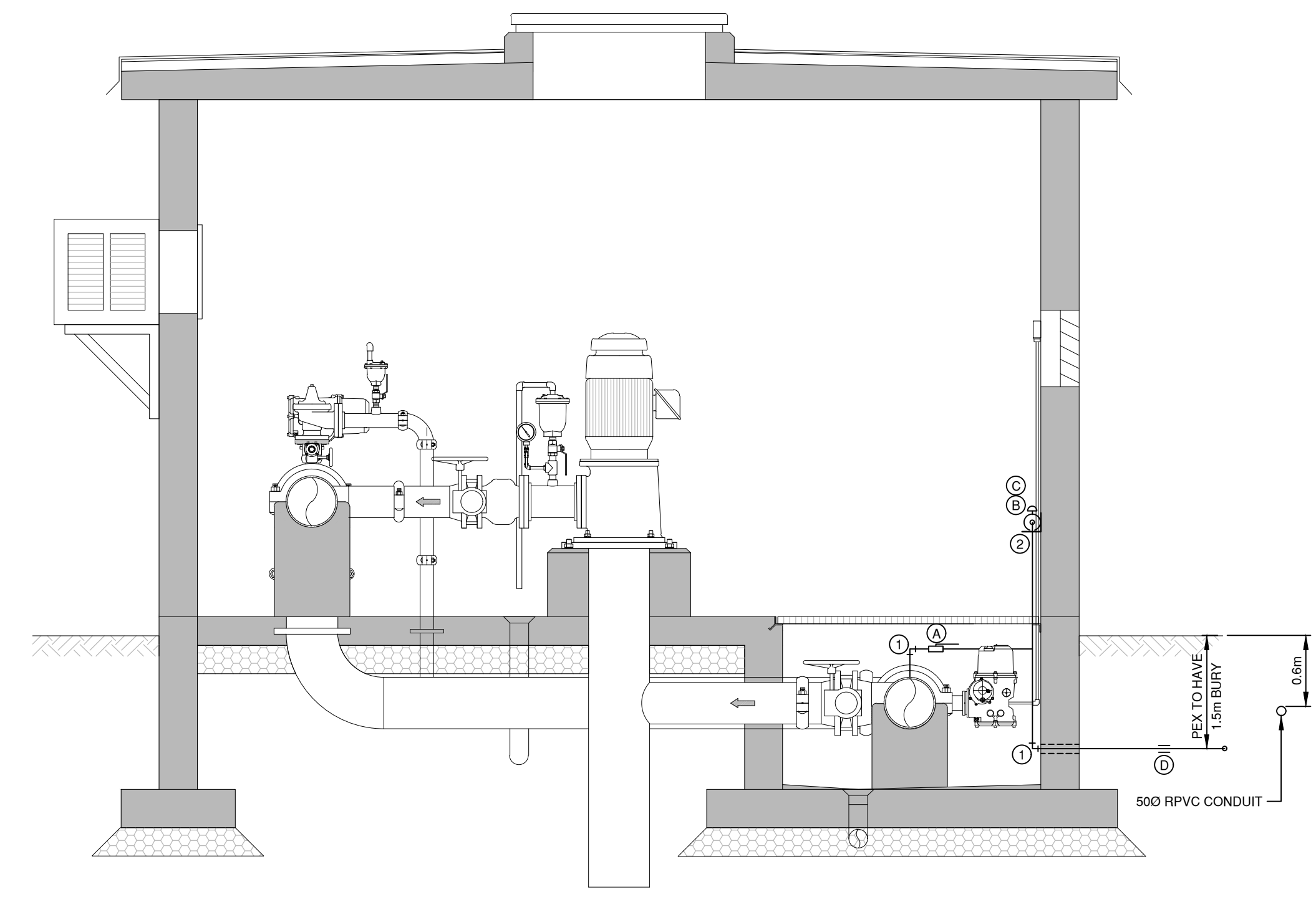
DRAWING No. 306-1891 01

SHEET 1 OF 2
ISSUE-REV 3

NOTE:
KEEP ELECTRICAL WIRE IN CONDUIT UNTIL 2'-4" ABOVE GRATE,
THEN RUN w/o CONDUIT TO POWER SOURCE.



BOOSTER STATION PLAN



A BOOSTER STATION SECTION

EQUIPMENT & FITTING SCHEDULE	
FITTINGS & EQUIPMENT	QUANTITY
1 25mm 90° ELBOW - SS, NPT, 150 RATED	5
2 WALL 'L' BRACKET PIPE SUPPORT	2
A 25mm - SS ISOLATION VALVE MA STEWART & SONS OR APPROVED EQUAL	1
B 25mm - PRV SET TO 80psi WATTS - MODEL #LF25AUB-Z3 OR APPROVED EQUAL	1
C 25mm - RPBP WATTS - MODEL #009QT OR APPROVED EQUAL	1
D 25mm x 25mm SS TO PEX TRANSITION COUPLER PHILMAR OR APPROVED EQUAL	1

ALL INTERNAL PIPING TO BE 25mm (1") STAINLESS STEEL (SS) 304, 150 RATED

LEGEND		
EXISTING	PROPOSED	DESCRIPTION
---	---	SANITARY MAIN
---	---	SANITARY FORCEMAIN
---	---	SANITARY MANHOLE
---	---	CLEANOUT
---	---	LIFT STATION
---	---	SEPTIC TANK
---	---	STORM MAIN
---	---	STORM DITCH
---	---	CULVERT
---	---	STORM MANHOLE
---	---	CATCHBASIN
---	---	STORM DRYWELL
---	---	WATER MAIN
---	---	WATER SERVICE
---	---	CURB STOP
---	---	VALVE
---	---	STANDPIPE
---	---	HYDRANT
---	---	AIR RELEASE VALVE
---	---	REDUCER
---	---	SPRINKLER
---	---	IRRIGATION BOX
---	---	END CAP
---	---	POWER
---	---	TEL
---	---	CABLE
---	---	STREET LIGHT
---	---	GAS
---	---	POWER POLE
---	---	LAMP STANDARD
---	---	LIGHT POST
---	---	POLE ANCHOR
---	---	JUNCTION BOX
---	---	TEST PIT
---	---	IRON PIN
---	---	SURVEY CONTROL

No.	DATE	DESCRIPTION	BY	APPD
2	MAR 17/20	ISSUED FOR TENDER	LR	SU
1	MAR 10/20	ISSUED FOR CLIENT REVIEW	LR	SU

ISSUES / REVISIONS				



TRUE CONSULTING
201 - 2079 Falcon Road - Kamloops BC - V2C 4J2
tel 250.828.0881 - fax 250.828.0717
info@TRUE.bc.ca

Oliver Town of
CANADA'S WINE CAPITAL

AIRPORT STREET SANI DUMP

BOOSTER STATION SERVICE CONNECTION DETAILS

SCALE	0 1:25 1
DESIGN BY	SU
DRAWN BY	LR
DATE	FEB 2020
PROJECT REFERENCE No.	306-1891
DRAWING No.	SHEET

306-1891 02
2 OF 2
ISSUE-REV
2